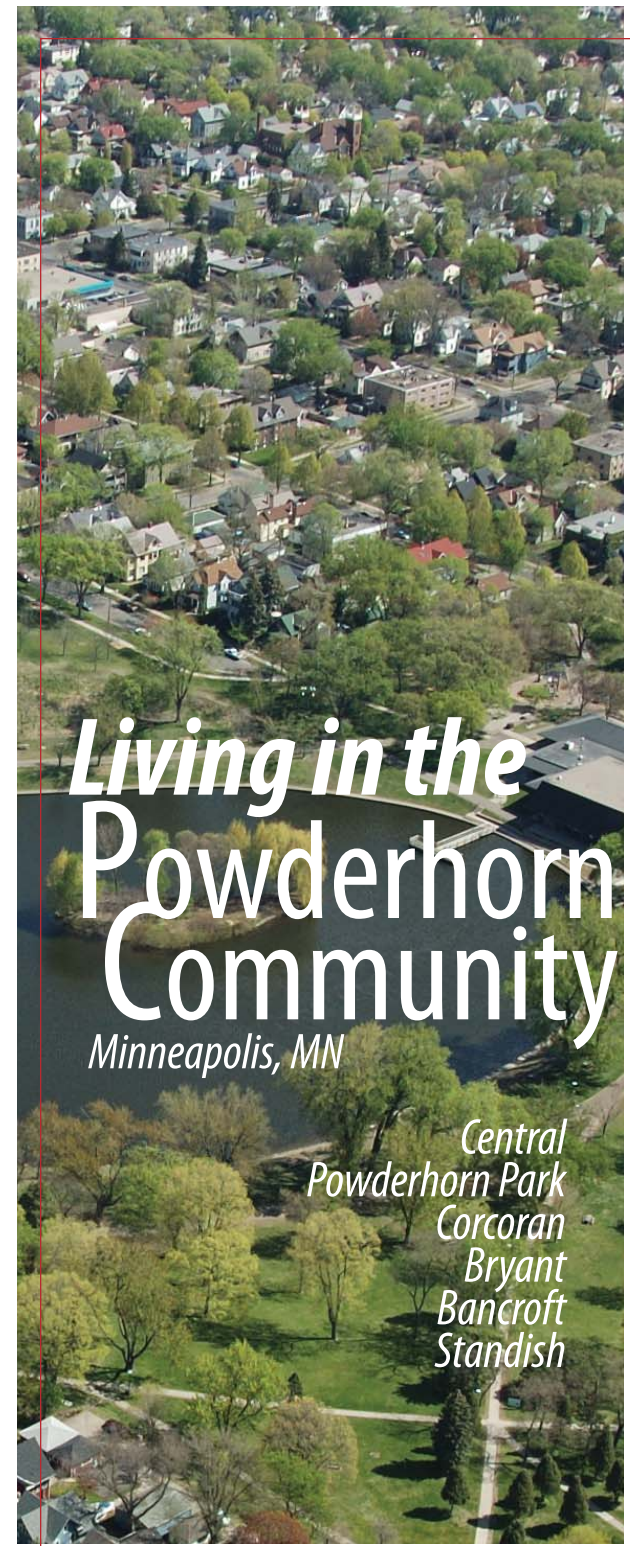
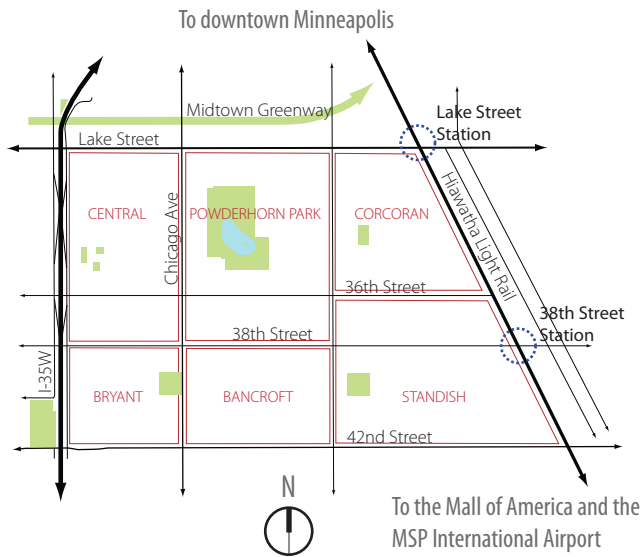


The **Powderhorn Community** in south Minneapolis includes **six vibrant neighborhoods**— Central, Powderhorn Park, Corcoran, Bryant, Bancroft, & Standish.



Living in the
Powderhorn Community
Minneapolis, MN

*Central
Powderhorn Park
Corcoran
Bryant
Bancroft
Standish*



Residential blocks lined with shade trees boast **affordable homes** with **historic character**. You needn't walk far to find a park, lake, or other green space.

The Powderhorn Community is a great place to live or buy a home!

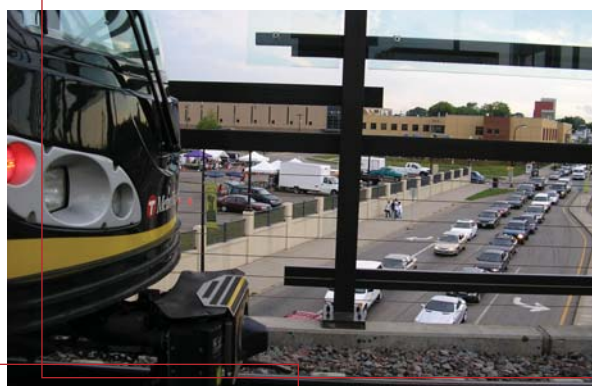
Global Market at the revitalized Midtown Exchange features more than 50 independent, locally-owned businesses.



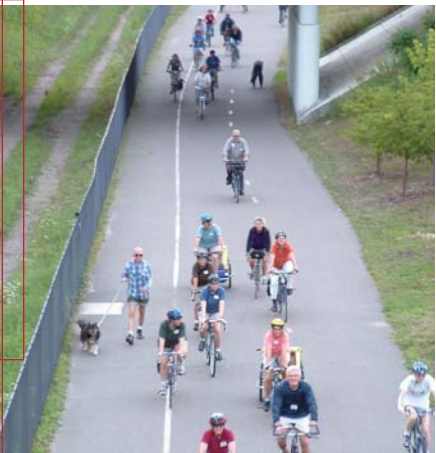
Strong neighborhood, community, and arts **organizations** reflect an **active, diverse, and stable** community.



Seasonal **farmers' markets** bring locally-made food, art, and entertainment right to your neighborhood.



Lake Street is a vibrant and colorful **place to eat, shop, and celebrate** cultures from around the world.



Light Rail Transit provides quick access to downtown Minneapolis, the MSP International Airport, and the Mall of America.

The **Midtown Greenway**, which connects the Mississippi River to the Chain of Lakes, is part of south Minneapolis' extensive system of bicycle and pedestrian trails.